



Tasmanian Bridge Association Inc

2026 Calendar



Contact Us

Contact details:

Clubrooms: 5 Marine Esplanade, New Town Bay

Phone: 0400 492 327

Email: tba@tasbridge.com.au

Web: tasbridge.com.au

Post: 5 Marine Esplanade, New Town, 7008

Bank Account Details for direct debit

BSB: 067-102

Account number: 2801 2004

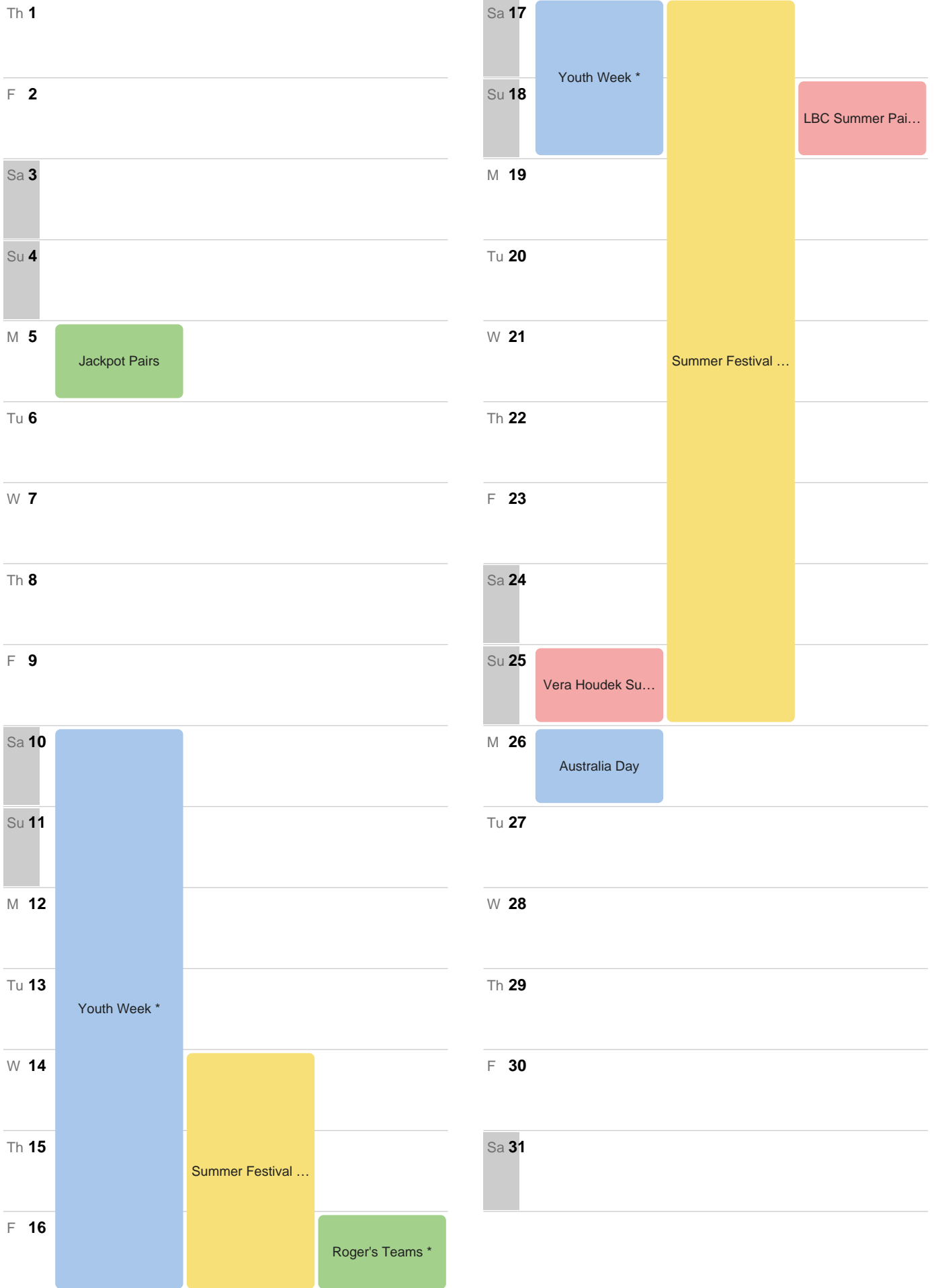
Account name: Tasmanian Bridge Association

ABN: 66 028 130 967

Venue hire

The TBA's purpose-designed Centre at 5 Marine Esplanade, New Town Bay serves as both our local Clubrooms and the headquarters for bridge in the state. The TBA premises are available for hire by community groups for suitable activities by arrangement with the TBA Committee. Please complete a booking request form (available [here](#)) and email it to the TBA at tba@tasbridge.com.au.

JANUARY 2026

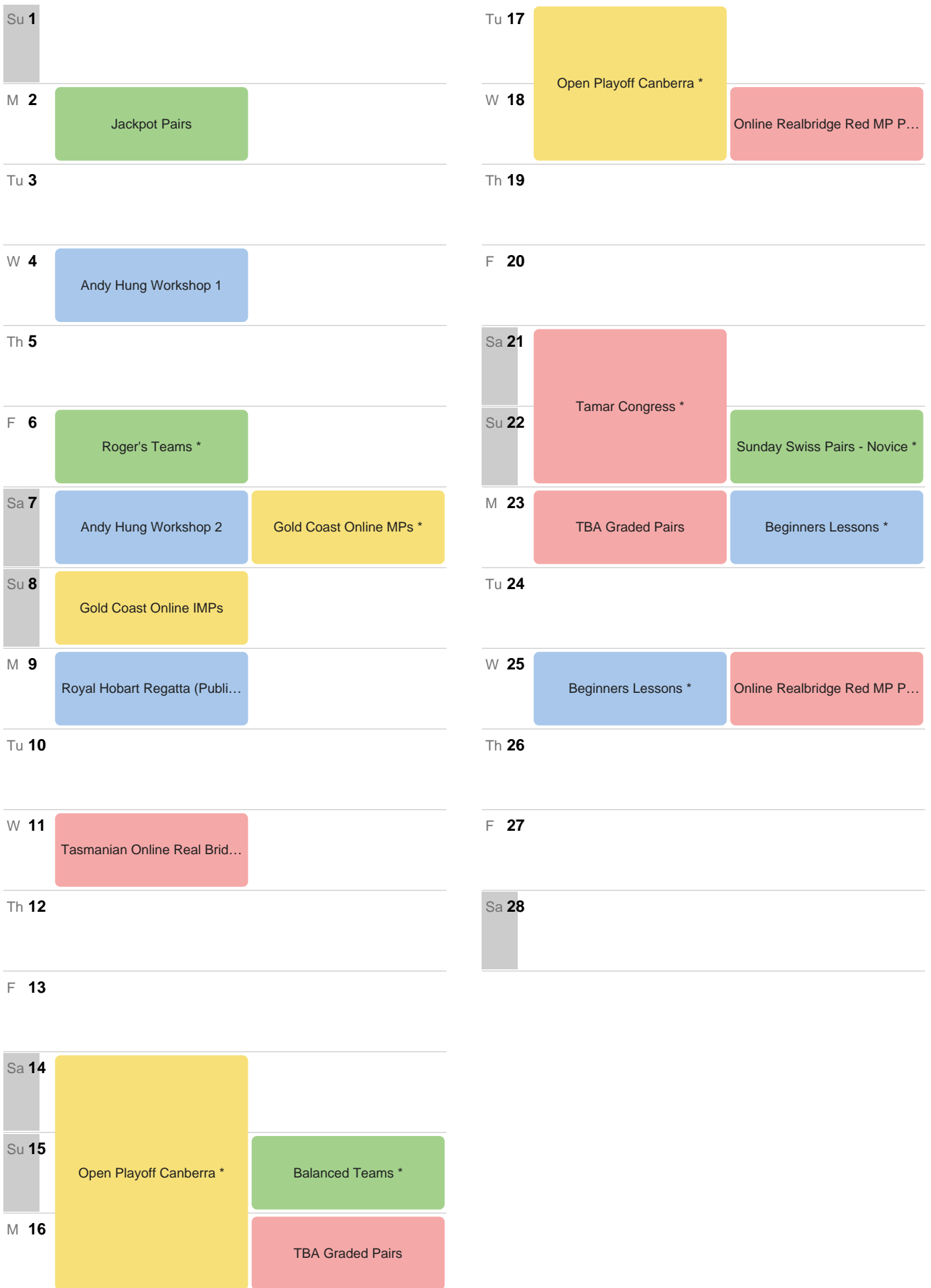


■ Green MPs
 ■ Red MPs
 ■ Gold MPs
 ■ Special events

^ Regular session to be confirmed, check the website.

* Entry in advance is required

FEBRUARY 2026



■ Green MPs
 ■ Red MPs
 ■ Gold MPs
 ■ Special events

^ Regular session to be confirmed, check the website.

* Entry in advance is required

MARCH 2026

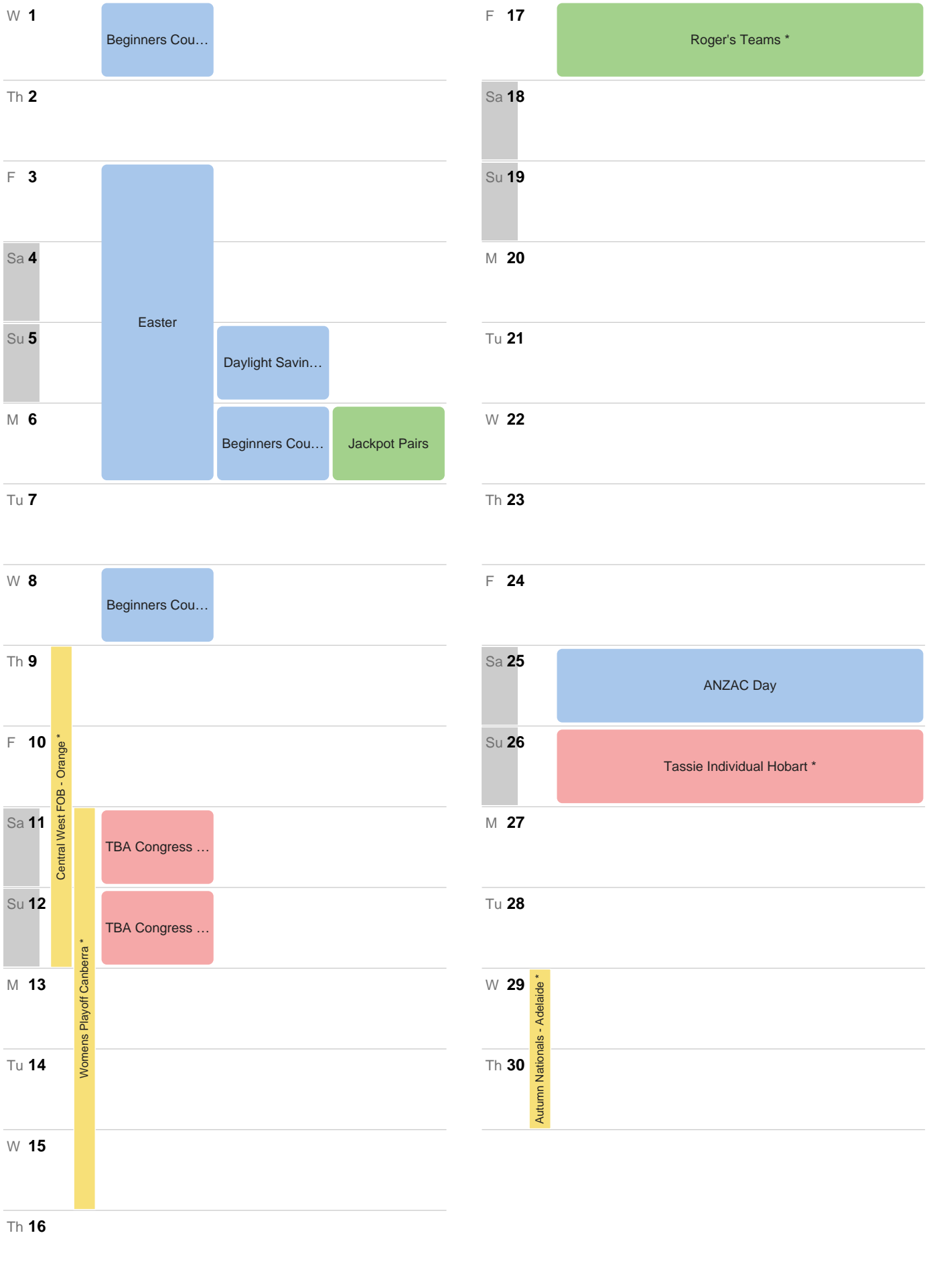
Su 1					Tu 17
M 2	Beginners Lessons *	Jackpot Pairs			W 18
Tu 3	ANC 2027 Planning Meeting	TFoB Planning Meeting			Th 19
W 4	Beginners Lessons *				F 20
Th 5					Sa 21
F 6					Su 22
Sa 7	Devonport Swiss Pairs *				M 23
Su 8					Tu 24
M 9	Beginners Lessons *	8 Hour Day			W 25
Tu 10	TBA Committee Meeting				Th 26
W 11	Beginners Lessons *				F 27
Th 12					Sa 28
F 13	Roger's Teams - St. Patricks...				Su 29
Sa 14	TBA AGM				M 30
Su 15					Tu 31
M 16	Beginners Lessons *				

■ Green MPs
 ■ Red MPs
 ■ Gold MPs
 ■ Special events

^ Regular session to be confirmed, check the website.

* Entry in advance is required

APRIL 2026



■ Green MPs
 ■ Red MPs
 ■ Gold MPs
 ■ Special events

^ Regular session to be confirmed, check the website.

* Entry in advance is required

MAY 2026

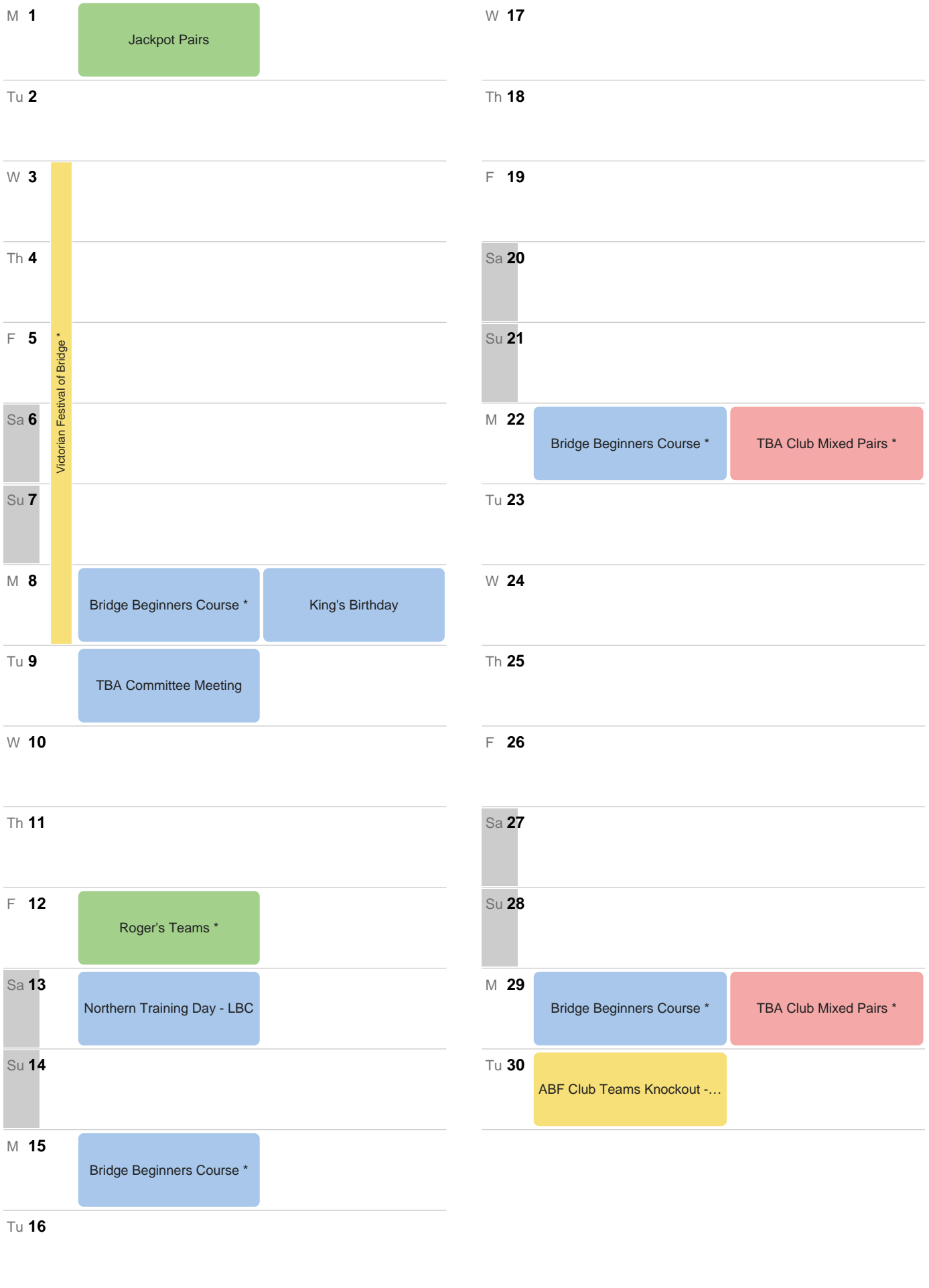
F 1	Autumn Nationals - Adelaide *		Su 17	Western 60...	Tassie Swiss Teams - TBA *
Sa 2			M 18		TBA Open/Handicap Teams *
Su 3			Tu 19		
M 4		Jackpot Pairs	W 20		
Tu 5			Th 21		
W 6			F 22		
Th 7			Sa 23	River City Gold Mixed Pairs ...	
F 8		Roger's Teams *	Su 24		Hobart City Bridge Club Congress *
Sa 9			M 25		
Su 10			Tu 26		Australia Wide Novice Pairs
M 11			W 27		
Tu 12	Barrier Reef Congress - Townsville *		Th 28		
W 13			F 29		Slam Bidding with Liam Milne
Th 14			Sa 30		
F 15			Su 31		Bridge Coaching 1 - Hobart *
Sa 16	Western 60...				

■ Green MPs
 ■ Red MPs
 ■ Gold MPs
 ■ Special events

^ Regular session to be confirmed, check the website.

* Entry in advance is required

JUNE 2026



■ Green MPs
 ■ Red MPs
 ■ Gold MPs
 ■ Special events

^ Regular session to be confirmed, check the website.

* Entry in advance is required

JULY 2026

W 1

Th 2

F 3

Sa 4

Su 5

M 6

Tu 7

W 8

Th 9

F 10

Sa 11

Su 12

M 13

Tu 14

W 15

Th 16

F 17

Sa 18

Su 19

M 20

Tu 21

W 22

Th 23

F 24

Sa 25

Su 26

M 27

Tu 28

W 29

Th 30

F 31

ANC - ACT - Interstate *
ANC - ACT - Butler *

Sunday Swiss Pairs - Novi...

Bridge Beginners Course *

Jackpot Pairs

Bridge Beginners Course *

TBA Club Restricted Swiss...

Club Novice Pairs *

TBA Club Restricted Swiss ...

GNOT Daytime Qualifying

Roger's Teams - Christmas i...

Tasmanian Online GNOT Q...

ABF Club Teams Knockout - ...

Tuesday Daytime Red Point ...

Tassie Matchpoint Pairs Qua...

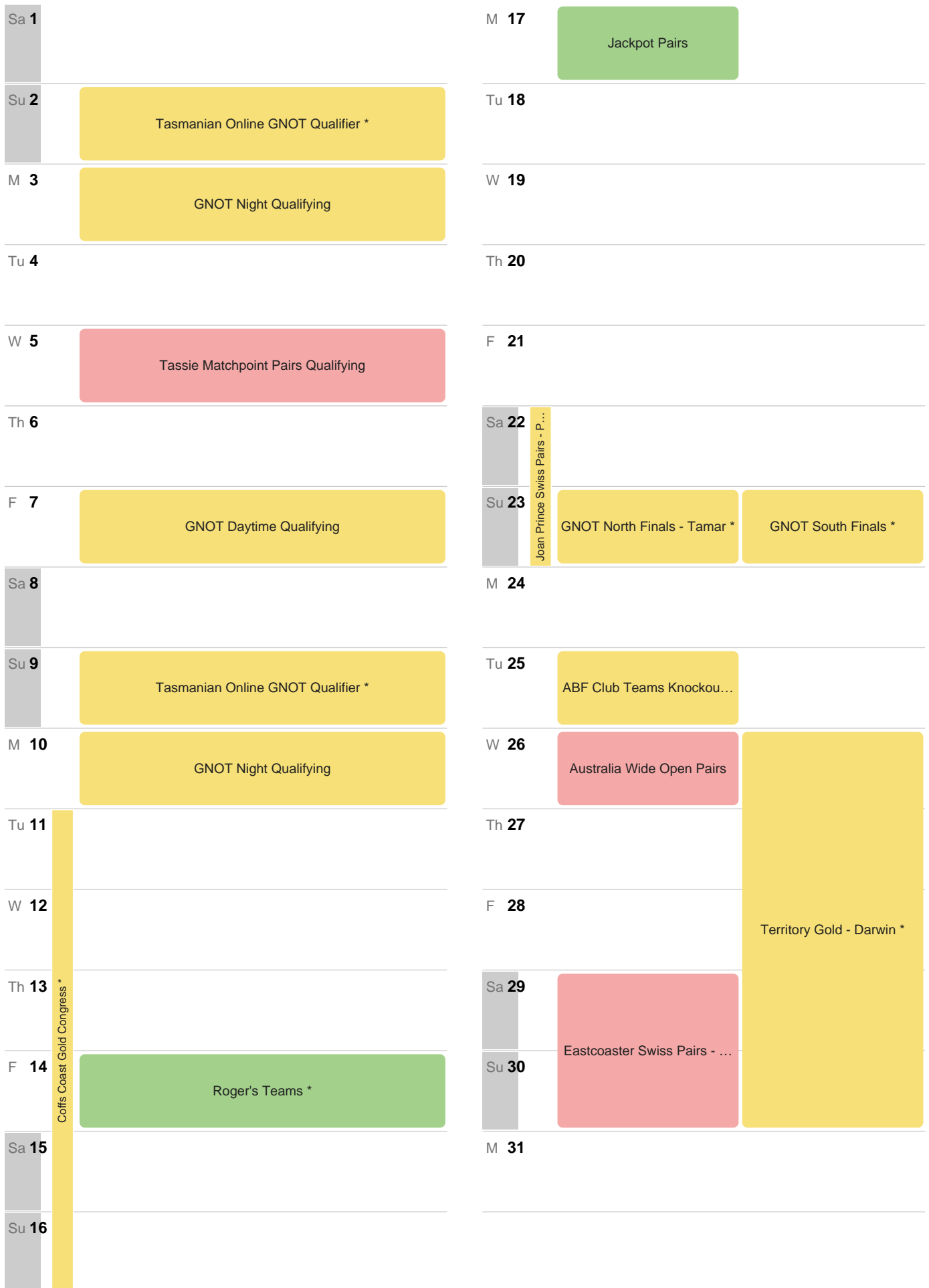
GNOT Daytime Qualifying

Green MPs Red MPs Gold MPs Special events

^ Regular session to be confirmed, check the website.

* Entry in advance is required

AUGUST 2026



■ Green MPs
 ■ Red MPs
 ■ Gold MPs
 ■ Special events

^ Regular session to be confirmed, check the website.

* Entry in advance is required

SEPTEMBER 2026

Tu 1

W 2

TBA Club Swiss Pairs *

Th 3

F 4

Roger's Teams *

Southern Graded Pairs

Sa 5

Su 6

M 7

Jackpot Pairs

Tu 8

W 9

TBA Club Swiss Pairs *

Th 10

F 11

Southern Graded Pairs

Sa 12

Su 13

Tassie Matchpoint Pairs Fin...

M 14

Tu 15

W 16

Th 17

Elsie Strickland Memorial Pa...

F 18

Southern Graded Pairs

Sa 19

Su 20

GNOT Qualifying - Online *

M 21

Tu 22

W 23

Th 24

Elsie Strickland Memorial Pa...

F 25

Southern Graded Pairs

Sa 26

TBA Board-A-Match Teams *

Su 27

Southern Open/Handicap Te...

M 28

Tu 29

ABF Club Teams Knockout -...

W 30

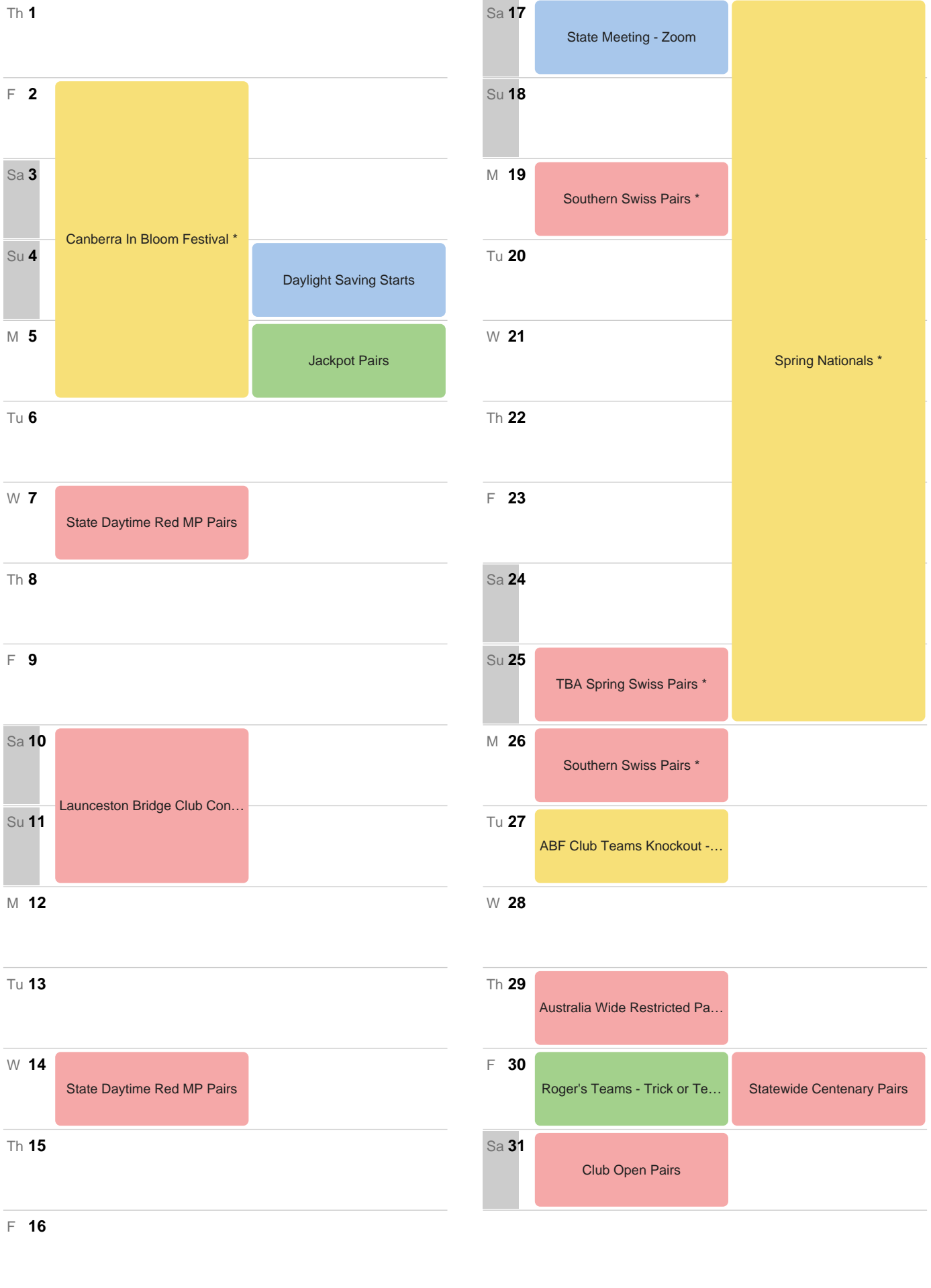
State Daytime Red MP Pairs

Green MPs Red MPs Gold MPs Special events

^ Regular session to be confirmed, check the website.

* Entry in advance is required

OCTOBER 2026

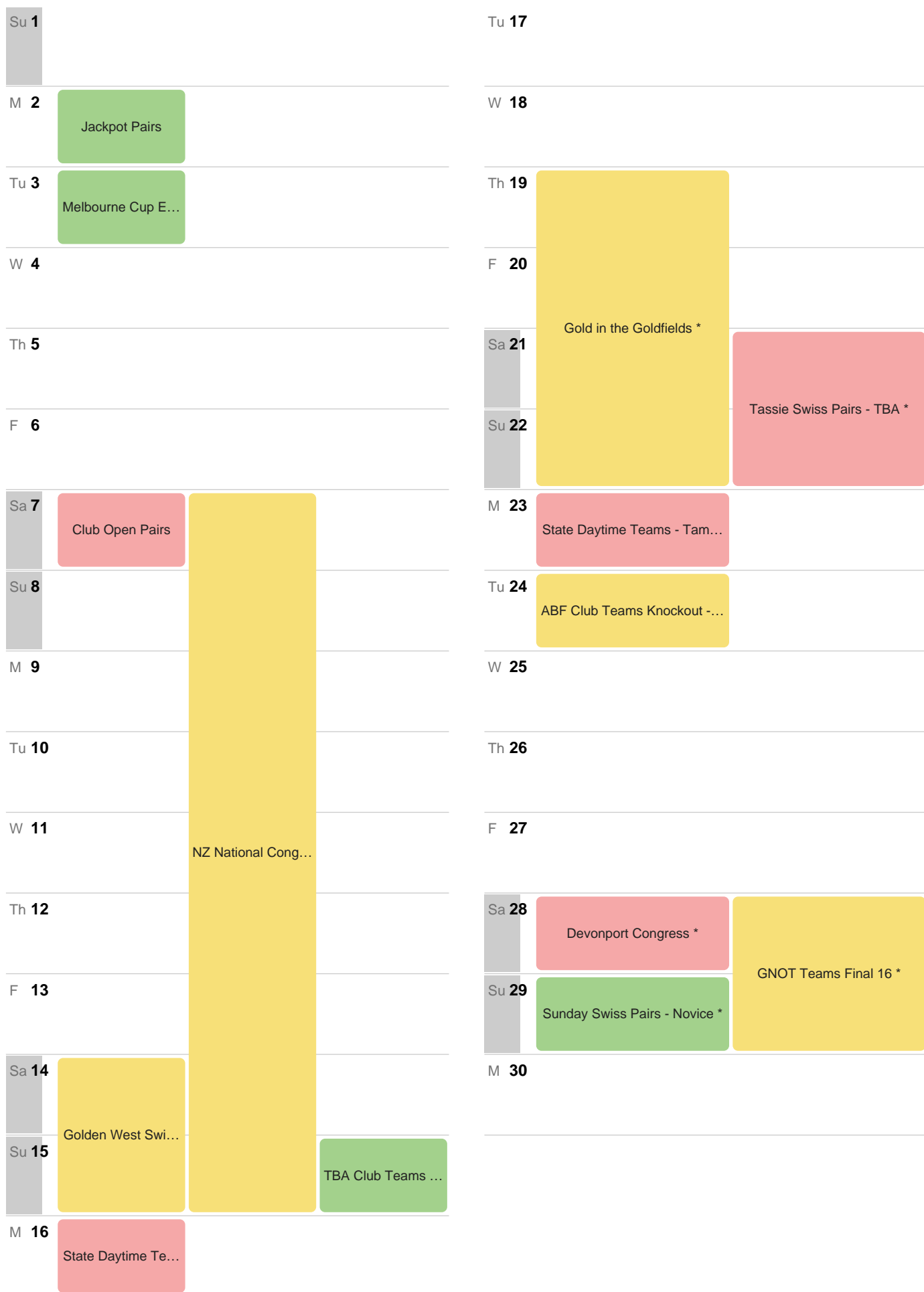


■ Green MPs
 ■ Red MPs
 ■ Gold MPs
 ■ Special events

^ Regular session to be confirmed, check the website.

* Entry in advance is required

NOVEMBER 2026



Green MPs Red MPs Gold MPs Special events

^ Regular session to be confirmed, check the website.

* Entry in advance is required

DECEMBER 2026

Tu 1

Th 17

W 2

F 18

Th 3

Sa 19

F 4

Roger's Teams *

Su 20

Sa 5

M 21

Su 6

Tu 22

M 7

Jackpot Pairs

W 23

Tu 8

Th 24

W 9

F 25

Th 10

Sa 26

F 11

Su 27

Sa 12

TBA Christmas Party

M 28

Su 13

Tu 29

M 14

Jackpot Pairs Finals

W 30

Tu 15

Th 31

W 16

Green MPs Red MPs Gold MPs Special events

^ Regular session to be confirmed, check the website.

* Entry in advance is required

Who's Who

Executive

Julie Rhodes

President

John Grosvenor

Vice President

Trish Colles

Secretary

Leigh Blizzard

Treasurer

Committee

Sue Falkingham

Committee Member, ABF Councillor, Director

Fran Healy

Committee Member

Paul Fredheim

Committee Member

Pam Murphy

Committee Member, Partnership Facilitator

Robin Barnes

Committee Member

Other Roles

Simon Edler

Chief Tournament Director, Director

Hugh Grosvenor

Bridge Operations Manager, Director

Malcolm Sherlock

Masterpoint Secretary, Director

Laura Bauermeister

Membership Officer

Directors

Chris Carolan

Director

Dallas Cooper

Director

Regular Sessions

Day	Session	Start – Finish
Monday	Monday Supervised Lesson and supervised play.	10:00 AM – 12:30 PM
	Monday Evening Duplicate Pairs	7:15 PM – 10:45 PM
Tuesday	Tuesday Daytime Duplicate pairs.	10:30 AM – 2:20 PM
Wednesday	Wednesday Morning Duplicate pairs.	10:00 AM – 1:30 PM
	Laugh & Learn Bid and play some set hands with discussion and some tips.	2:00 PM – 4:30 PM
	Wednesday Supervised Supervised duplicate pairs.	7:00 PM – 10:00 PM
	Tasmanian Online Red MP Pairs Weekly Online Realbridge Red masterpoint session. Enter and pay on My ABF by 6:45pm.	7:15 PM – 10:00 PM
Thursday	Thursday Morning Duplicate pairs.	9:30 AM – 12:45 PM
	Thursday Afternoon Duplicate pairs.	1:00 PM – 4:15 PM
	Hobart City Bridge Club Session run by the Hobart City Bridge Club.	7:00 PM – 10:20 PM
Friday	Friday Morning Duplicate pairs.	9:30 AM – 12:30 PM
	Roger's Teams Monthly Friday teams.	7:15 PM
Saturday	Saturday Afternoon Duplicate pairs.	1:15 PM – 4:45 PM

- Please be seated at least 5 minutes before the scheduled starting time.
- Please make yourself known to the session Director if you do not have a partner.
- Partners are not required for TBA regular sessions, except when a pre-entered section is being played.
- The Directors for a specific week may vary from those listed.